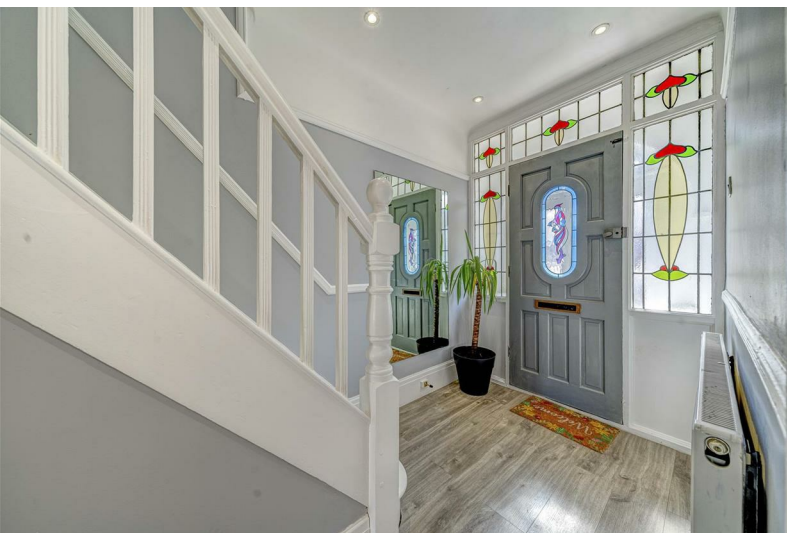




71 Stride Avenue

Baffins, Portsmouth, PO3 6HN

Offers in excess of £350,000



71 Stride Avenue

Baffins, Portsmouth, PO3 6HN

Offers in excess of £350,000



Nestled in the heart of the ever-popular Baffins area of Portsmouth, this beautifully presented three-bedroom terraced home offers the perfect blend of traditional charm and modern convenience with a GARAGE to the rear. Ideally suited for families, first-time buyers or anyone looking to settle in a well-connected, community-focused area this property in Baffins ticks all the boxes with its spacious layout, attractive features and desirable location.

Upon arrival, the home welcomes you with its classic terraced frontage and a well-maintained exterior. Stepping through the front door, you're greeted by a light and airy entrance hallway that sets the tone for the rest of the property. Immediately to the left is a cosy yet generously sized lounge, bathed in natural light thanks to a stunning round bay window that creates a warm and inviting space. Whether it's a quiet evening in or entertaining guests, this room is perfect for relaxing and unwinding.

To the rear of the ground floor, the heart of the home reveals itself in the form of a spacious and modern kitchen breakfast room. Thoughtfully designed with both practicality and style in mind, the kitchen boasts sleek, contemporary units, ample worktop space, and a range of high-quality integrated appliances, ideal for everyday living and family meal times. There's plenty of room for a breakfast table too – perfect for morning coffee or casual dining.

Beyond the kitchen lies a conservatory/sunroom, which stretches across the full width of the back of the house. Flooded with natural light and offering views over the rear garden, this space makes an excellent playroom or utility space – giving you the flexibility to

tailor it to your lifestyle.

Outside, the property continues to impress with a well-designed, low-maintenance garden. Featuring an artificial lawn and paved area, the garden is perfect for those who want the benefit of outdoor space without the upkeep. It provides a lovely spot for barbecues, family time or simply enjoying a bit of sunshine. At the very rear of the garden, you'll find a rare and valuable addition for a home in this location – a private garage, accessed via a secure rear service road. Ideal for off-street parking or additional storage, this is a feature that adds real practicality and value.

Upstairs, the home offers three well-proportioned bedrooms. The master bedroom, located at the front of the house, benefits once again from the characteristic round bay window, adding a sense of space and elegance. There's ample room for a double bed and additional furniture, making it a restful and stylish retreat. The second bedroom is another comfortable double, overlooking the rear garden, while the third bedroom is a good-sized single – ideal for a child's room, guest room, or a home office if required.

Completing the upstairs accommodation is a modern family bathroom, fitted with a clean and contemporary suite including a bath with shower over, washbasin, and WC. Stylish tiling and a bright, neutral palette add to the overall fresh and modern feel.

This home also benefits from gas central heating and double glazing throughout, ensuring comfort and energy efficiency year-round.

Location, Location, Location

Situated in a sought-after residential pocket of Baffins, this property is ideally placed for families thanks to its proximity to well-regarded local schools and nurseries. You're just a short walk from the popular Baffins Pond and Tamworth Park – ideal for outdoor walks, playtime or dog walking – and there's a strong sense of community in the area. A range of local amenities including shops, cafes and takeaways are nearby, while excellent transport links connect you easily to Portsmouth city centre, the Eastern Road, and the wider Hampshire area.

Whether you're upsizing, downsizing, or looking to take your first step onto the property ladder, this delightful Baffins home offers space, style, and a superb location – all ready for you to move straight into.



Road Map



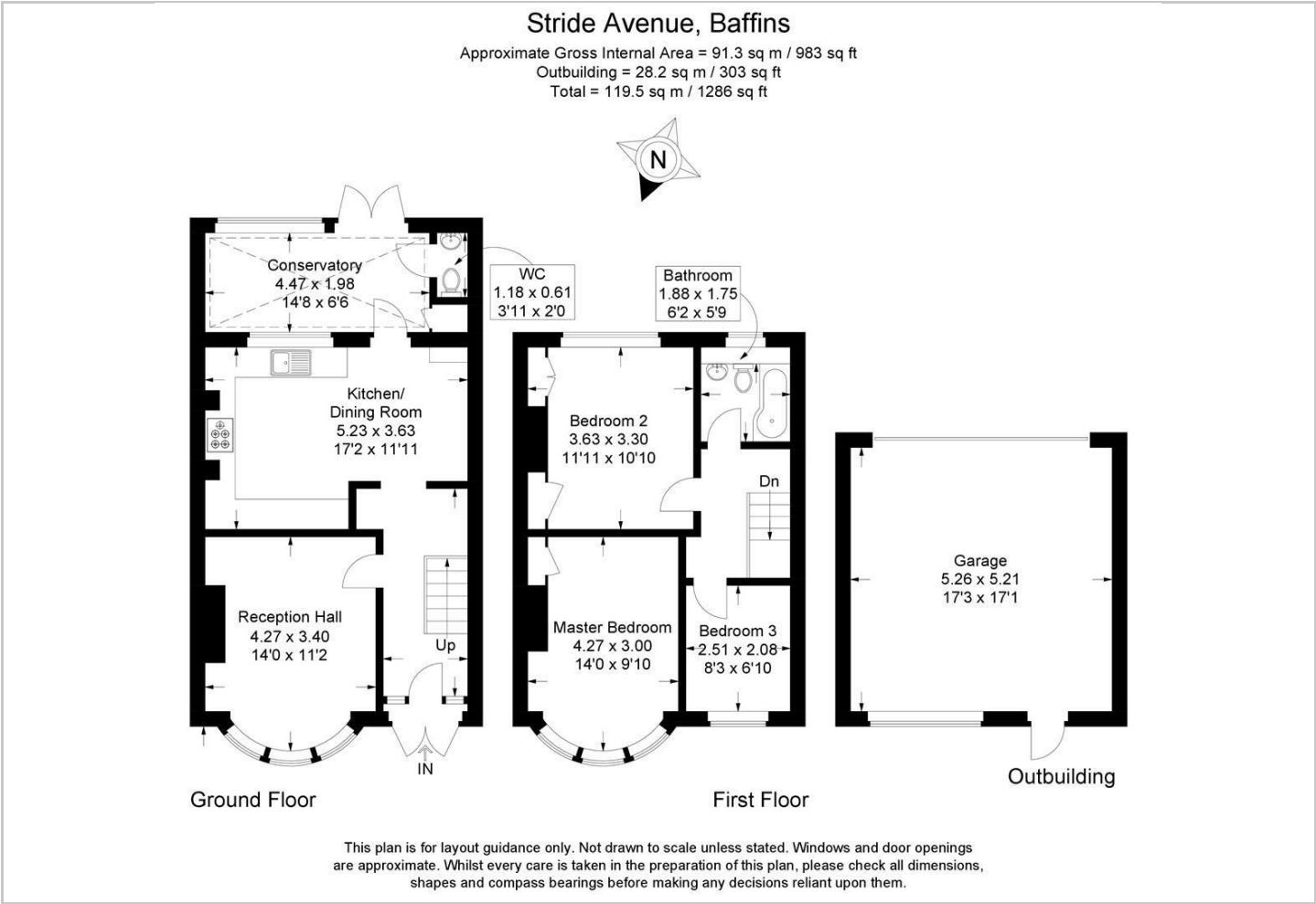
Hybrid Map



Terrain Map



Floor Plan



Viewing

Please contact our Central Office on 02394 217317 if you wish to arrange a viewing appointment for this property or require further information.

Energy Efficiency Graph



These particulars, whilst believed to be accurate are set out as a general outline only for guidance and do not constitute any part of an offer or contract. Intending purchasers should not rely on them as statements of representation of fact, but must satisfy themselves by inspection or otherwise as to their accuracy. No person in this firms employment has the authority to make or give any representation or warranty in respect of the property.